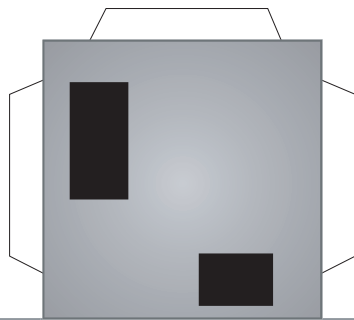
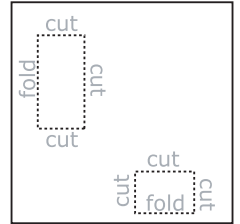


place glue on tabs



One option is to slice these rooftop boxes along three edges and fold them so they stick straight up.



Cut out buildings along solid line. Fold along edges, and fold down roof tabs. Rubber cement allowed to dry is the recommended adhesive. Feel free to print out and assemble as many buildings needed for your display.

THESE FILES MAY NOT BE HOSTED OR SOLD IN ANY OTHER CONTEXT You may link to them as you wish, but they must remain as free downloads via MillionairePlayboy.com or AgeOwns.com

Graphics and engineering ©2006 MillionairePlayboy.com Visit MillionairePlayboy.com for more printable models and backdrops

